

NOTE:
 MAXIMUM SLOPE BEHIND CURB TO BE
 DETERMINED BY FIELD ENGINEER.

REVISIONS	
Date	Details
98-09-14	DESIGN STANDARD UPDATE

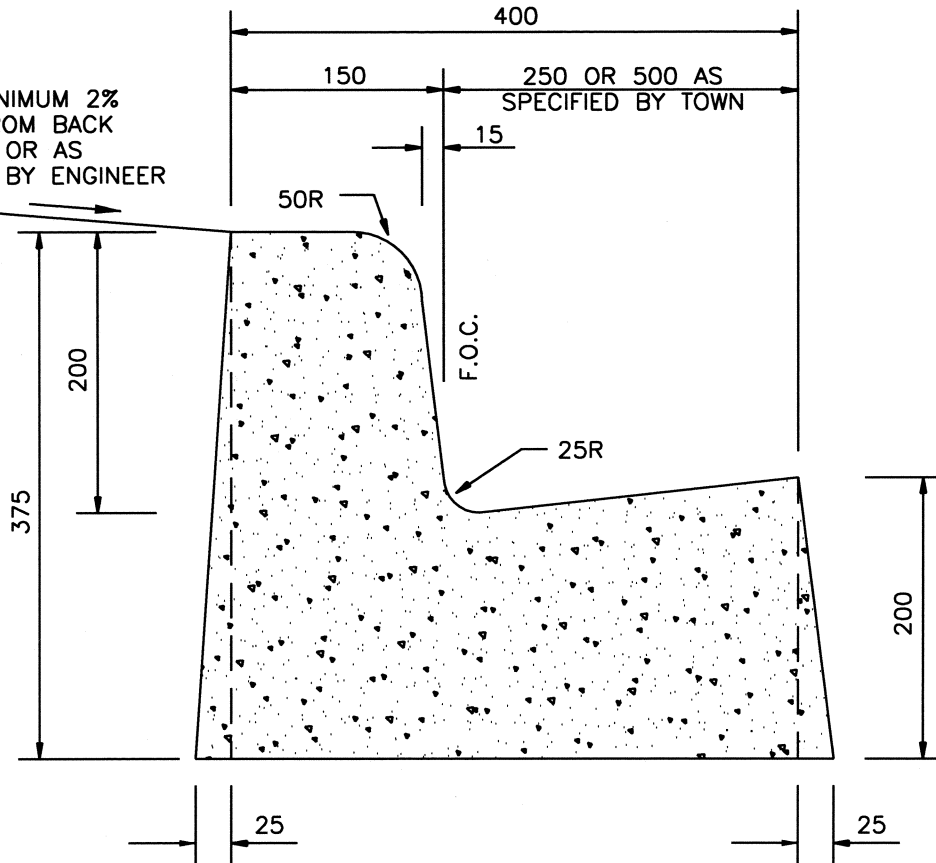


Town of Whitecourt

ROLLED CURB AND GUTTER

APPROVED:	STD. DWG. No.
SCALE: N.T.S.	8-01
DATE: JANUARY, 1996	

SLOPE MINIMUM 2%
TO OR FROM BACK
OF CURB OR AS
DIRECTED BY ENGINEER

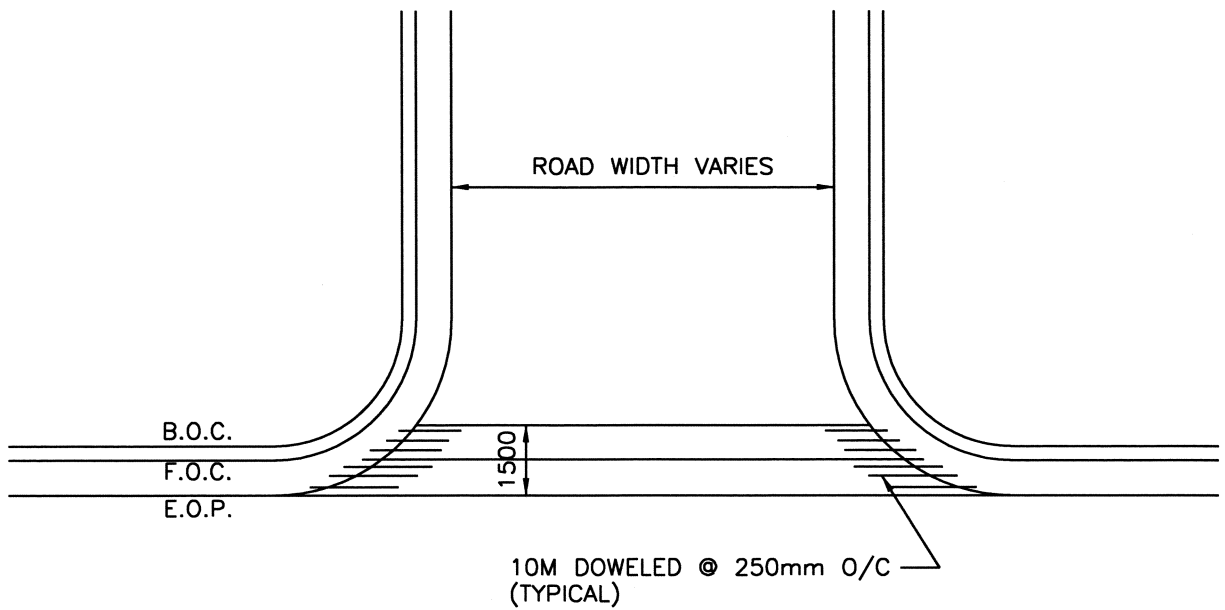


REVISIONS	
Date	Details
98-09-14	DESIGN STANDARD UPDATE

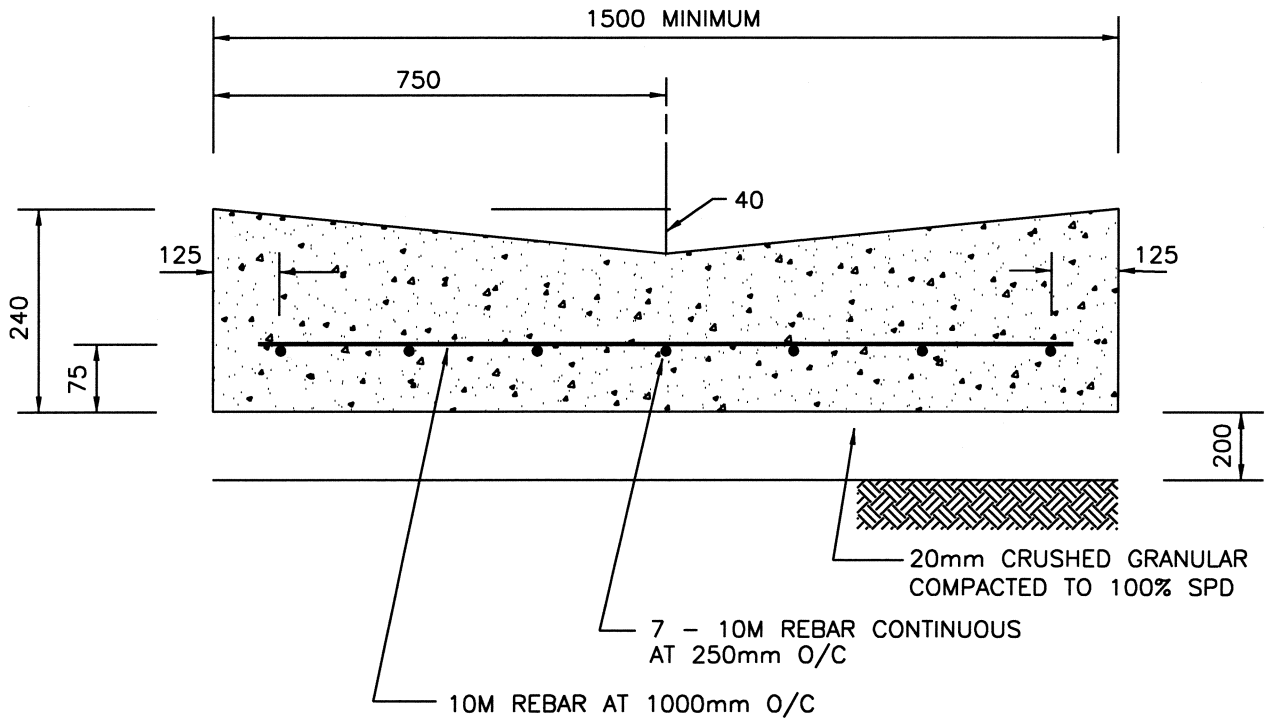


Town of Whitecourt STRAIGHT FACED CURB AND GUTTER

APPROVED:	STD. DWG. No.
SCALE: N.T.S.	8-02
DATE: JANUARY, 1996	



NOTES:
 EDGE OF SWALE TO MATCH GUTTER EDGE.
 ROLL DOWN UPSTREAM GUTTER PAN TO ALLOW WATER TO DRAIN



REVISIONS	
Date	Details
98-09-14	DESIGN STANDARD UPDATE



Town of Whitecourt	
CONCRETE SWALE	
APPROVED:	STD. DWG. No.
SCALE: N.T.S.	8-03
DATE: JANUARY, 1996	

ACH 98-09-14 8-03.DWG