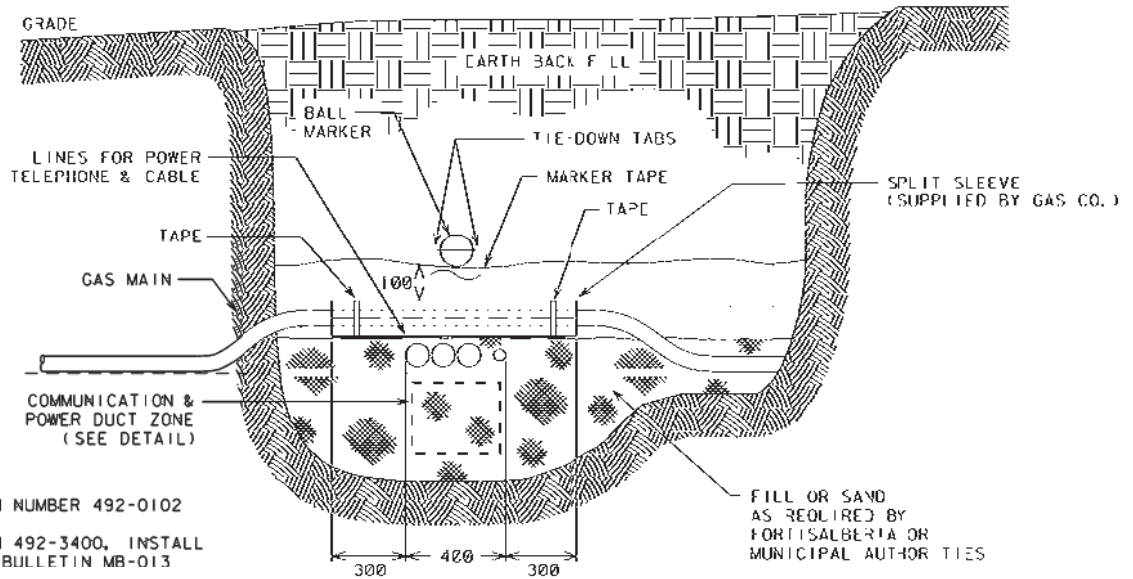


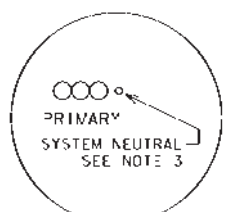
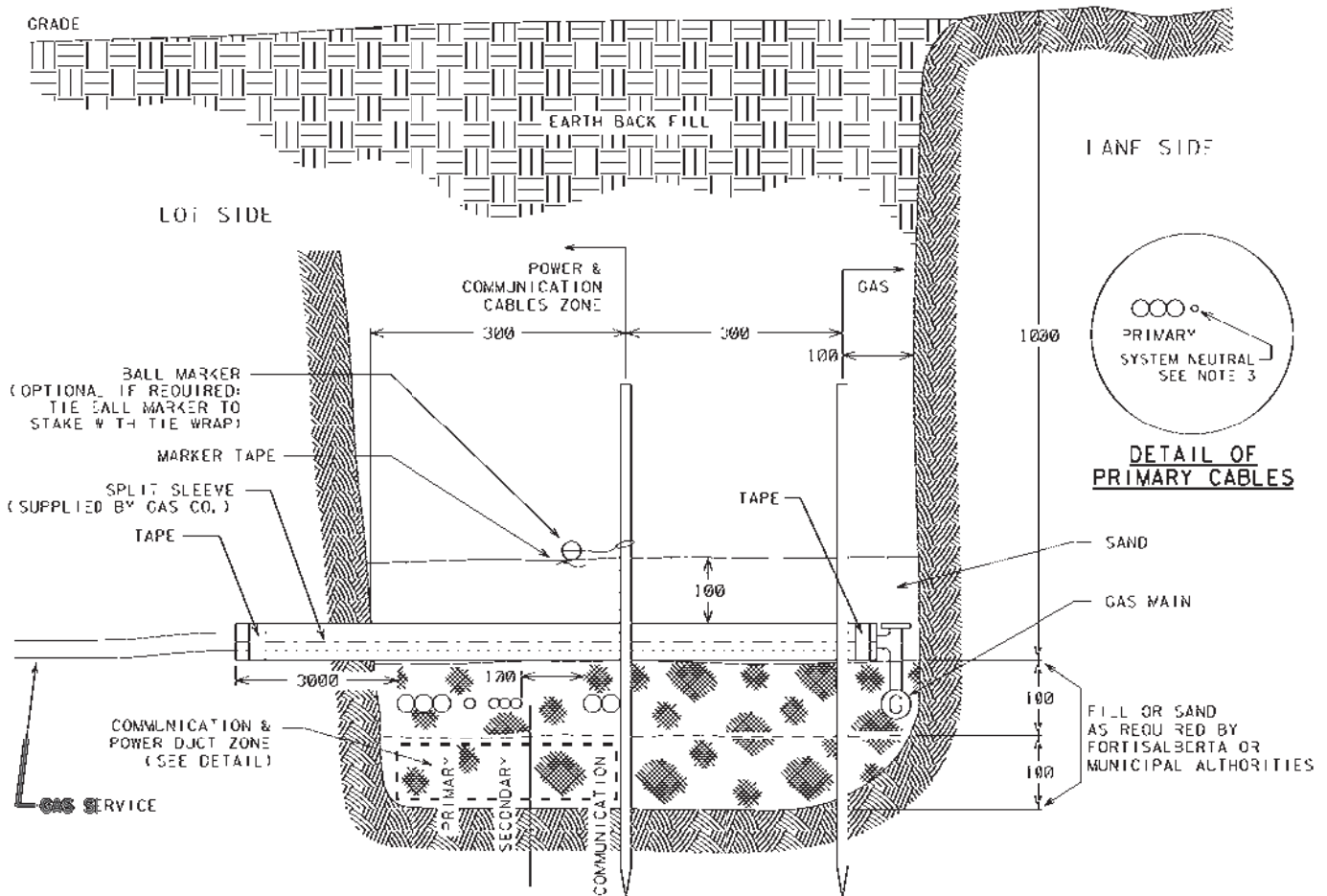
DETAIL OF PRIMARY CABLES

NOTES:

- 1 - MARKER TAPE ITEM NUMBER 492-0102
- 2 - BALL MARKER ITEM 492-3400, INSTALL AS PER MATERIAL BULLETIN MB-013
- 3 - SYSTEM NEUTRAL CAN BE DIRECTLY BURIED OR IN 3 INCH PVC CONDUIT



TRENCH DETAIL - GAS MAIN DUCT CROSSING



DETAIL OF PRIMARY CABLES

FOUR PARTY BACK LANE - TYPICAL SERVICE DUCT CROSSING

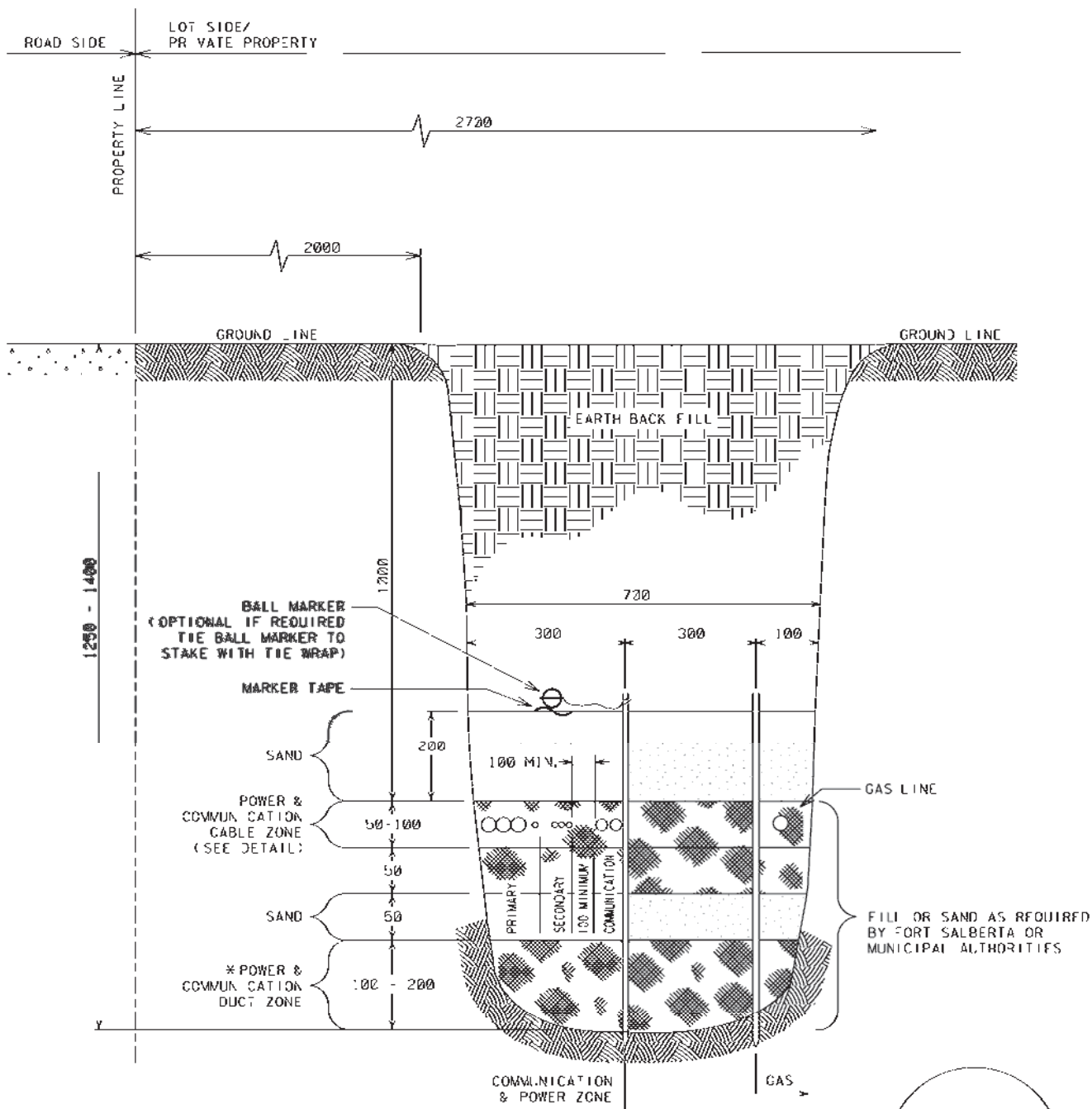


Description	- ADDED SYSTEM NEUTRAL	
	- UPDATED DRAWING	
Revision Date (YY/MM/DD)	09-06-10	Date Created (YY/MM/DD)
Revision Checked	CS	OR/DRAL Design / Checked
Revision Approved	HN	ORIGINAL Approved

Revision Date (YY/MM/DD)	09-06-10	Date Created (YY/MM/DD)	07-08-13
Revision Checked	CS	OR/DRAL Design / Checked	CS
Revision Approved	HN	ORIGINAL Approved	JZ

FOUR PARTY TYPICAL SERVICE DUCT CROSSING

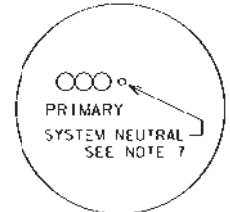
FORTIS	Drawing Number	Sheet
	1260	2 / 2



* IF SPACE IS NOT SUFFICIENT TO AVOID CABLES CROSSING EACH OTHER, THE SAME CABLE LAYOUT AS THE "NARROW TRENCH" IN DRAWING 1216 SHALL BE UTILIZED, i.e. PRIMARY & SECONDARY SHALL BE A MINIMUM OF 100mm BELOW COMMUNICATION CABLES.

NOTES:

- 1 - ENSURE 0.3m MINIMUM SEPARATION BETWEEN GAS LINE AND CLOSEST DUCT/CABLE
- 2 - STAKES INSTALLED AT 3m INTERVALS
- 3 - ALL DIMENSIONS ARE IN MILLIMETRES UNLESS OTHERWISE INDICATED
- 4 - FACILITIES IN DRAWING ASSUME GAS LINE ON PROPERTY AND MAY BE FLIPPED DEPENDING ON GAS LINE LOCATION. KEEP PRIMARY CABLE THE GREATEST DISTANCE FROM THE GAS LINE
- 5 - MARKER TAPE ITEM 492-0102
- 6 - BALL MARKER ITEM 484-3400, INSTALL AS PER MATERIAL BULLETIN M3-013
- 7 - SYSTEM NEUTRAL CAN BE DIRECTLY BURIED OR IN 3/4" NCH PVC CONDUIT



DETAIL OF PRIMARY CABLES

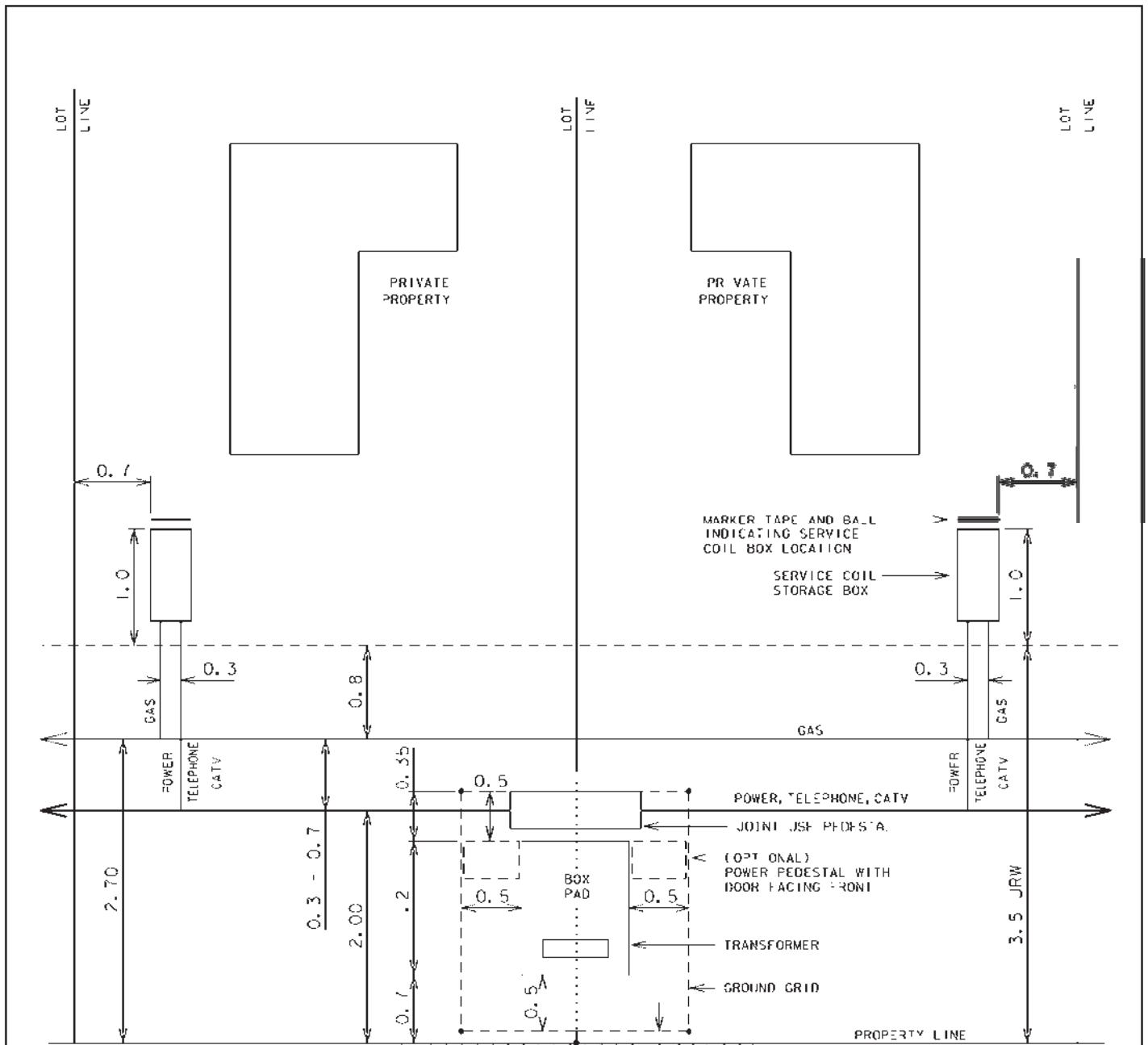


Description - ADDED SYSTEM NEUTRAL - UPDATED DRAWING	Revision Date (YY/MM/DD)	Date Created (YY/MM/DD)
	09-06-10	03-04-23
	REVISION Checked	OR ORIGINAL Design Checked
	REVISION Approved HW	ORIGINAL Approved

**TYPICAL DETAIL
FOUR PARTY - MAIN TRENCH
FRONT DISTRIBUTION**

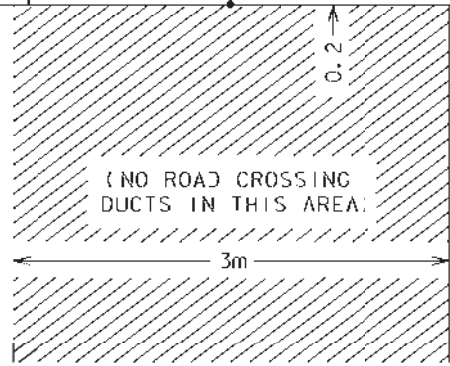
FORTIS

Drawing Number	Sheet
1260	1/2

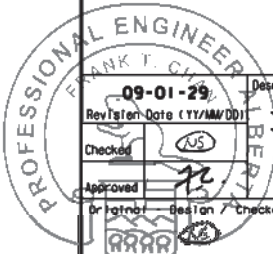


NOTE:

- 1 - MAINTAIN 12" SEPARATION BETWEEN GAS AND UTILITY IN SERVICE TRENCH
- 2 - THE POSITION OF THE TRANSFORMER PAD AND GROUND GRID CAN DEVIATE FROM THE INDICATED POSITION (IF THE SITUATION ALLOWS) TO ALLOW FOR GREATER SEPARATION BETWEEN UTILITY AND GAS LINE
- 3 - ALL DIMENSIONS ARE IN METERS UNLESS OTHERWISE INDICATED



← STREET →



Description RENAME DRAWING FROM 1253 TO 1252 3 OF 3 CORRECTED THE LOCATION OF THE PROPERTY LINE	Original - Approved <i>FC</i>	Date Created (YY/MM/DD) 02-11-26
---	----------------------------------	-------------------------------------

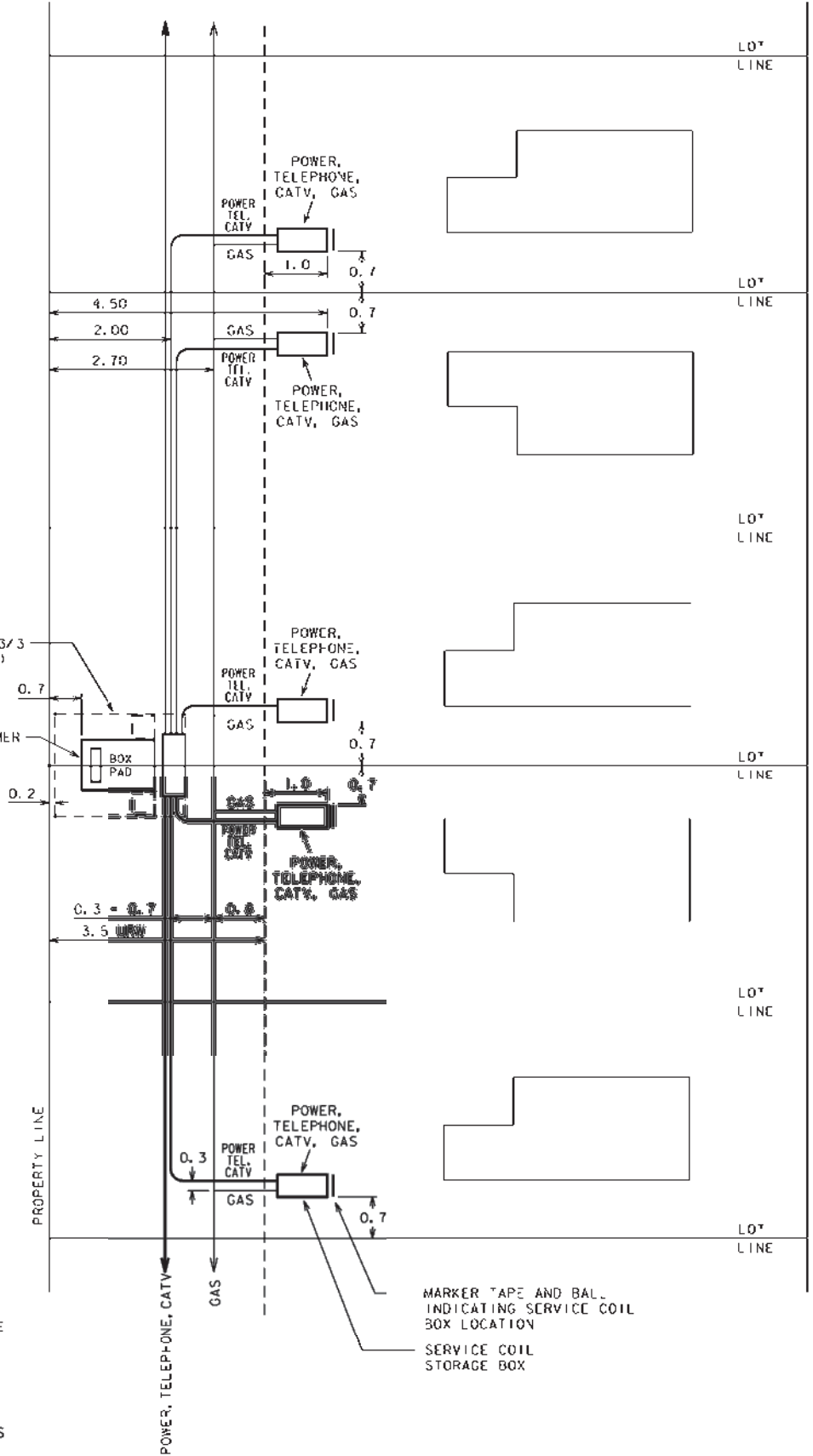
4 PARTY TYPICAL TRANSFORMER LOCATION FRONT DISTRIBUTION	
Growing Number 1252	Sheet 3 / 3



STREET

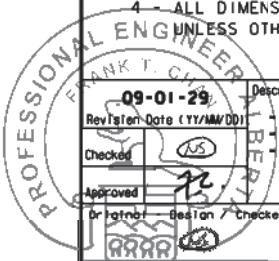
(SEE DRAWING 1252-3/3 FOR DETAILS)

TRANSFORMER
BOX PAD



NOTE:

- 1 - GUARD POSTS REQUIRED IF TRANSFORMER PAD IS LESS THAN 1m FROM DRIVEWAYS
- 2 - THE POSITION OF THE TRANSFORMER PAD AND GROUND GRID CAN DEVIATE FROM THE INDICATED POSITION (IF THE SITUATION ALLOWS) TO ALLOW FOR GREATER SEPARATION BETWEEN UTILITY AND GAS LINE
- 3 - MAINTAIN 12" SEPARATION BETWEEN GAS AND UTILITY IN SERVICE TRENCH
- 4 - ALL DIMENSIONS ARE IN METERS UNLESS OTHERWISE INDICATED



Revision	Date (YY/MM/DD)	Description
09-01-29		REMEMBERED DRAWINGS REVISED GAS, POWER AND TEL. ALIGNMENT CORRECTED THE LOCATION OF THE PROPERTY LINE
Checked		
Approved		
Original	Beston	Checked

Original - Approved
FC

Date Created (YY/MM/DD)
02-11-26

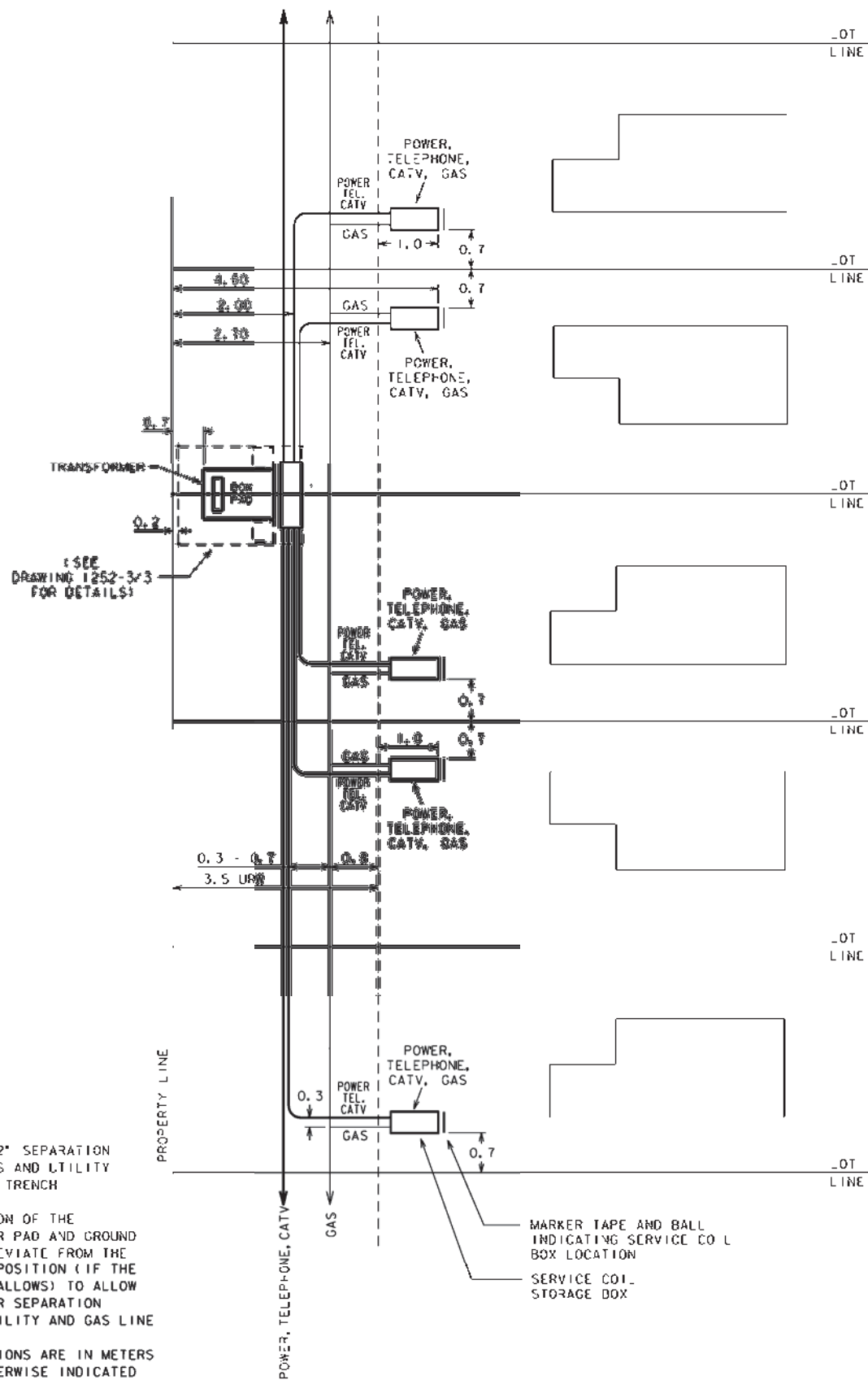
NOT TO SCALE

FORTIS

Growing Number Sheet
1252 2 3

**4 PARTY
FRONT DISTRIBUTION
GARAGES SIDE BY SIDE**

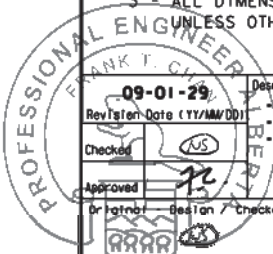
S T R E E T



NOTE:

- 1 - MAINTAIN 12" SEPARATION BETWEEN GAS AND UTILITY IN SERVICE TRENCH
- 2 - THE POSITION OF THE TRANSFORMER PAD AND GROUND GRID CAN DEVIATE FROM THE INDICATED POSITION (IF THE SITUATION ALLOWS) TO ALLOW FOR GREATER SEPARATION BETWEEN UTILITY AND GAS LINE
- 3 - ALL DIMENSIONS ARE IN METERS UNLESS OTHERWISE INDICATED

MARKER TAPE AND BALL INDICATING SERVICE COIL BOX LOCATION
SERVICE COIL STORAGE BOX



09-01-29	Description
Revised Date (YY/MM/DD)	RENUMBERED DRAWINGS
Checked	REVISED GAS, POWER, AND TEL. ALIGNMENT
Approved	CORRECTED THE LOCATION OF THE PROPERTY LINE
Original - Boston	
Checked	

Original - Approved	Date Created (YY/MM/DD)
FC	02-11-26

NOT TO SCALE



Growing Number	Sheet
1252	1/3

4 PARTY FRONT DISTRIBUTION GARAGES SIDE BY SIDE