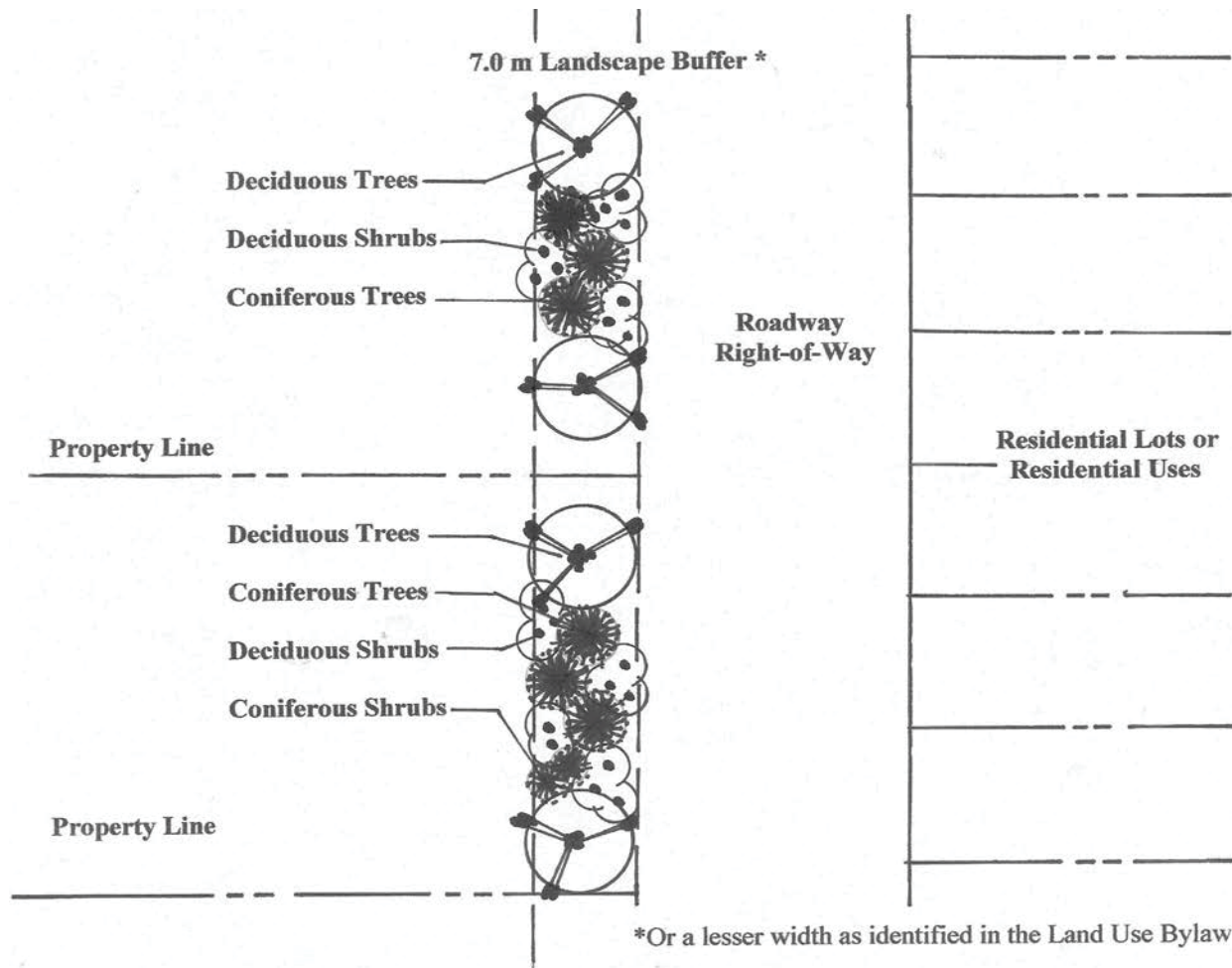


The required landscaped buffer shall include a mix of 40 % deciduous and 60% coniferous trees and shrubs, and shall be designed to sufficiently screen the commercial or industrial development from adjacent uses or district.

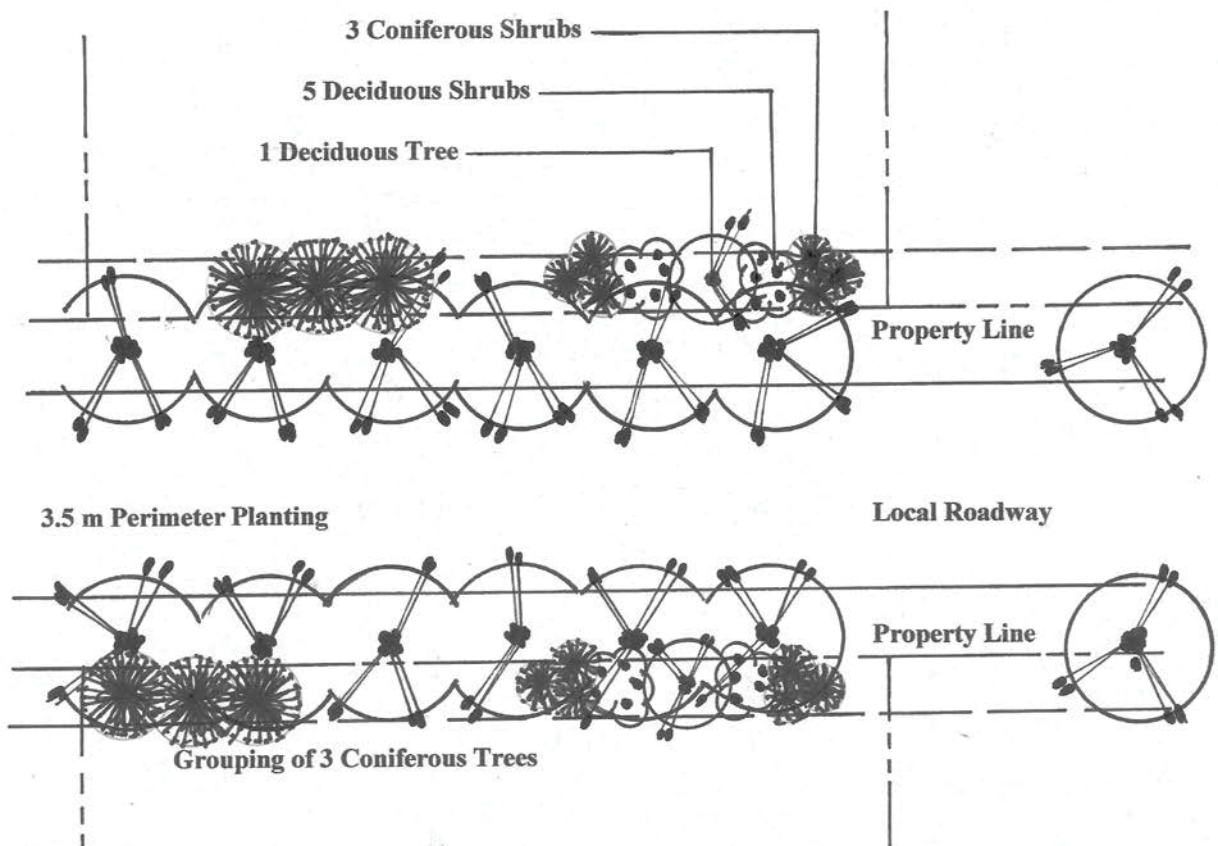
Within this buffer the property owner may choose or be directed by conditions in the Development Permit to include a 1.0 metre high berm. The berm shall be incorporated into the design with trees and shrubs planting. Ground cover plant material may also be used in this landscape buffer.



**TEMPLATE 2 - Landscaped Buffer - Lots Adjacent to Residential Lots or a Residential Use (NTS)**

### 3.3 Perimeter Landscaping -Interior Lots

Following the Town of Whitecourt Land Use Bylaw, the *Landscape Templates* require that commercial or industrial lots that adjoin a public roadway except a Jane shall have perimeter landscaping. The perimeter landscaping shall be at least 3.5 metres around the perimeter of a private lot adjacent to the public roadway. Trees must be located a minimum of 2.0 metres from the property line. All trees shall be planted at regular intervals. If coniferous trees are use they shall be planted in groupings of three (3) trees. A minimum of 60 mm caliper size for deciduous trees is required at the time of planting for all the trees. All trees selected shall have a minimum 6.0 metre height at maturity. Ground cover plant material may be used in this landscape buffer. Wood mulch shall be used at a minimum depth of 100mm.



**TEMPLATE 3 - Perimeter Planting on Interior Lots (NTS)**